

TACHINUS PALLIPES, A NEW INTERMEDIATE HOST OF THE CESTODE *SORICINIA DIAPHANA* (CHOŁODKOWSKY, 1906)

In ecological studies of cestodes, conducted in 1966 at our field station in Klec, southern Bohemia, we also examined 1,628 specimens of beetles belonging to 20 species. Cysticeroids of the cestode species *Soricinia diaphana* (CHOŁODKOWSKY, 1906) were found in the beetle species *Tachinus pallipes* (GRAVENHORST). Of a total of 14 specimens examined, two were positive (incidence 4 and 7 cysticeroids, time of collection: February). *Tachinus pallipes* is a completely new intermediate host for cestodes. For the exact determination of this intermediate host, my thanks are due to Dr. Smetana.

Also KISIELEWSKA (Bull. Acad. Polon. Scie. 8: 219–222, 1960) observed cysticeroids of the cestode *Soricinia diaphana* in the beetle *Geotrupes stercorosus* Panz., collected in the Bielowiecza National Park in Poland during studies on the life cycles of cestodes.

Description: Cysticeroid of almost spherical shape (Fig. 1), measuring 0.200–0.260 mm in diameter. Tail relatively short, but so much extended at its base that it covers nearly half of the posterior portion of the cyst. Cyst covered with 5 layers. The outer hyaline layer is very thin without a distinct structure. The underlining thin homogeneous layer can be viewed only on viable cysts and not on fixed preparations. The basal layer, relatively thick (8–10 μ) with a radially arranged structure, is of darker colour. This is followed by an outer fibrous layer

of longitudinal fibrous structure. In the last intermediary parenchymatous layer calcareous corpuscles are irregularly dispersed. Scolex

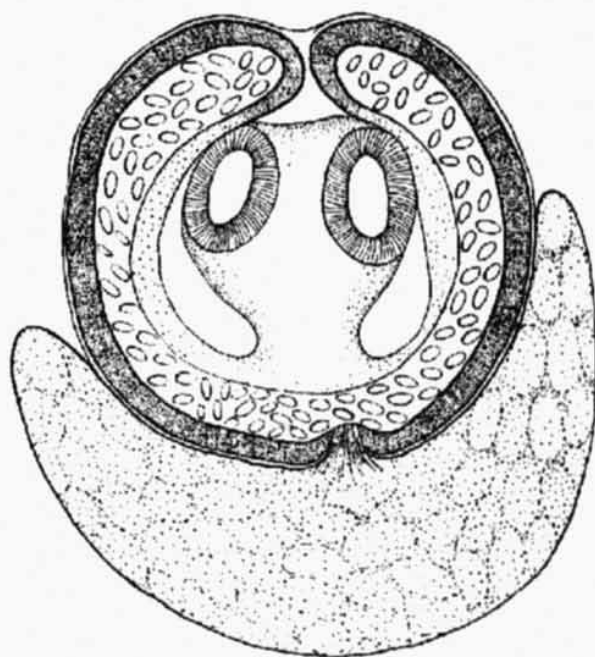


Fig. 1.

oval, width 150–180 μ , length 160–200 μ , armed with four suckers measuring 60–80 by 80–100 μ in diameter.

J. PROKOPIČ, Institute of Parasitology, Czechoslovak Academy of Sciences, Prague