

HAMATOSPICULUM QUADRIDENS (MOLIN, 1885) FROM A NEW HOST FROM INDIA

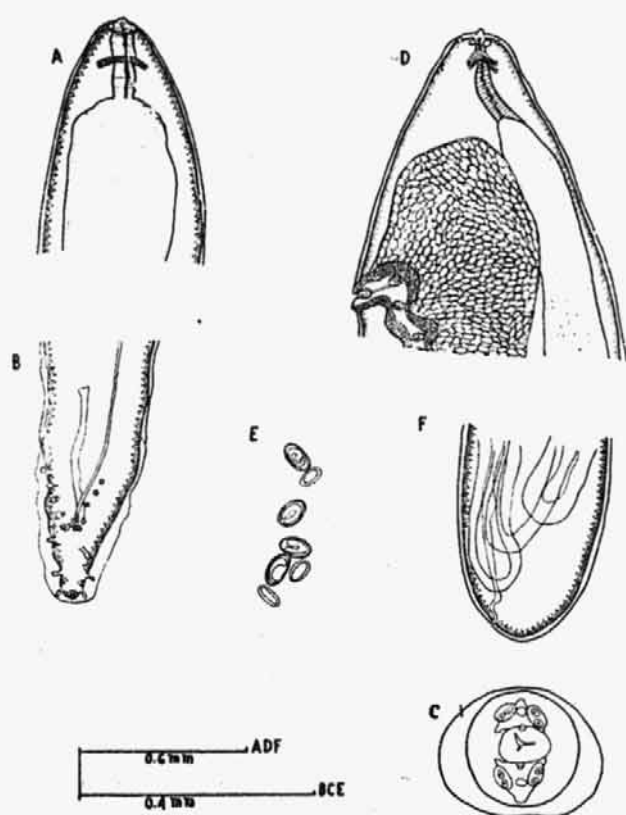


Fig. 1. *Hamatospiculum quadridens*. A — Male, anterior end, ventral view, — Male, posterior end, ventral view, C — End-on view, D — Female, anterior end, lateral view, E — Eggs, F — Female, posterior end, lateral view.

Six female and seven male specimens were obtained from the subcutaneous tissues of the Brown fish owl *Ketupa zeylonensis* in Aurangabad, Maharashtra, India.

These are stout worms tapering very gradually at both the extremities. Anterior end is more rounded and thicker than the posterior extremity. The cuticle has fine transverse striations. The head is surrounded by one pair of lateral amphids and four pairs of submedian cephalic papillae. There are two laterally projecting teeth. The oesophagus is divided into two

parts, an anterior short and narrow portion surrounded by nerve ring, and a posterior, longer and broader portion. The nerve ring is located very close to the anterior extremity.

Male. 16.62—22.54 mm in length and 0.58 mm in breadth. The head diameter 0.07—0.11 mm. The nerve ring encircles the narrow portion of oesophagus at 0.12—0.13 mm from the anterior end. The total length of oesophagus 6.38—8.10 mm, maximum width 0.36—0.40 mm. The cloaca opens at 0.09—0.11 mm from the posterior extremity. The tail is surrounded by narrow caudal alae measuring 0.28 mm in length and 0.17 mm in width in the largest male. There are 8 pairs of caudal papillae and a single median precloacal papilla, out of which 4 pairs are precloacal, 1 pair adcloacal and 3 pairs postcloacal in position. The spicules are very unequal and dissimilar, one being thick and slightly curved, 0.25—0.30 mm in length, whereas the other is very long and thin and 1.70—2.08 mm long.

Female. 46.44—47.04 mm in length, 0.86 to 0.94 mm in maximum breadth. The head diameter 0.16—0.22 mm. The nerve ring is located at 0.06—0.09 mm from the anterior end. The total length of oesophagus 10.54 mm in specimen which is 46.44 mm long. The vulva is situated at a distance of 0.95—0.98 mm from the head end. The eggs are embryonated, 0.04 to 0.06 × 0.03 mm in dimension. The tail is very short, bluntly rounded, 0.06—0.07 mm in length.

The present species resembles in all the body measurements and characters *Hamatospiculum quadridens* (Molin, 1858) (see Sonin M. D., *Osnovy nematodologii* XXI/2, Publ. House Nauka, Moskva, 390 pp., 1968). This parasite is reported from a new host and for the first time from India.

RASHEEDA ILYAS,
Department of Zoology, Marathwada
University, Aurangabad, Maharashtra,
India