

GYRODACTYLUS TIBETANUS SP. N. (MONOGENEA: GYRODACTYLIDAE), A NEW FISH PARASITE FROM TAJIKISTAN

The species described herein was obtained from the gills of *Noemacheilus stoliczkai* (Steindachner) from the high mountain Lake Bulunkul in Tajikistan during the years 1967 and 1968. Fishes were collected with nets.

The parasites were fixed in 4% formalin and mounted as permanent preparations in glycerin-gelatine. Illustrations were prepared with the aid of a camera lucida. Measurements (in millimeters) were made according to the procedure of Ergens and Lom (Causative agents of parasitic diseases of fish, Academia, Praha, 384 pp., 1970 in Czech).

Gyrodactylus tibetanus sp. n. Fig. 1

Host, location and locality: *Noemacheilus stoliczkai* (Steindachner); gills; the Lake Bulunkul, Tajikistan.

Specimens studied: 4. The holotype (measurements in parentheses) was collected from fish caught on July 27, 1978 and it is deposited in the collections of the Zoological Institute, Academy of Sciences of the Tajik SSR, Du-

shanbe. Paratypes are deposited in the collections of the Institute of Parasitology, Czechoslovak Academy of Sciences, Prague and Zoological Institute, Academy of Sciences of the U.S.S.R., Leningrad.

Description: Total length of anchors 0.055 to 0.064 (0.059), shaft 0.045–0.048 (0.045), point 0.026–0.029 (0.027), root 0.019–0.022 (0.020). Measurements of ventral bar without lateral processes 0.005–0.006 × 0.017–0.019 (0.006 × 0.017); shield longitudinally bifurcated and 0.017–0.019 (0.017) long. Size of fine dorsal bar 0.001 × 0.013–0.017 (0.015). Total length of marginal hooks 0.020, of their hook proper 0.006–0.007.

G. tibetanus sp. n. most closely resembles in the shape of anchors *G. parvus* Bychowsky, 1936, but it differs from this species in the shape and size of marginal hooks.

U. D. DZHALILOV,

Zoological Institute, Academy of Sciences of the Tajik SSR, Dushanbe

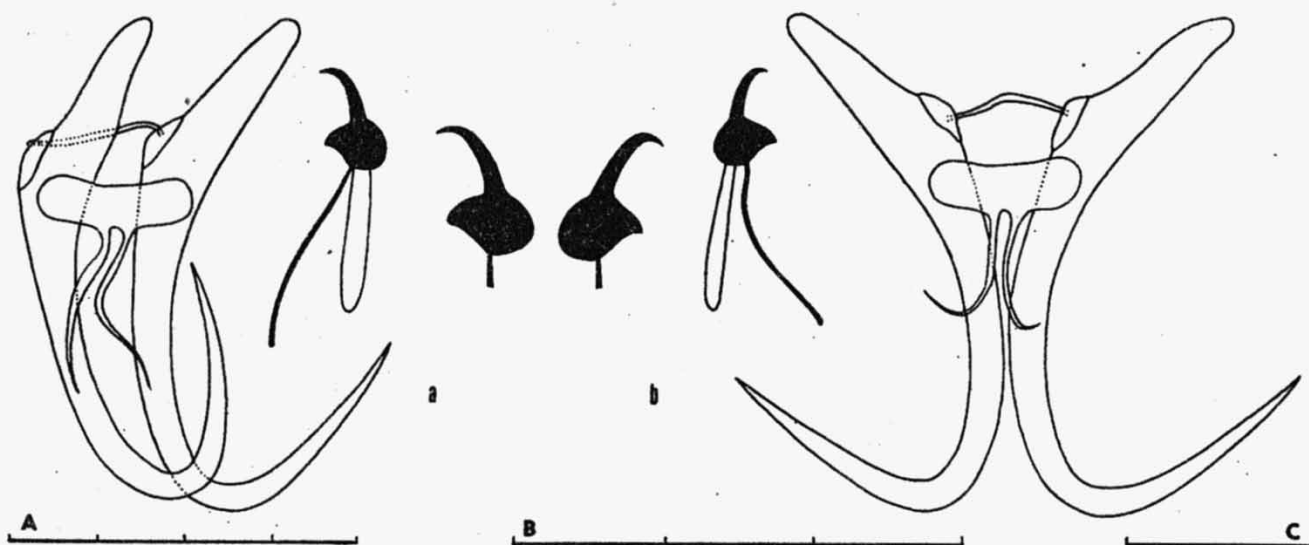


Fig. 1. Hard parts of the opisthaptor of *Gyrodactylus tibetanus* sp. n. a — holotype, b — paratype. Scales (1 part = 0.01 mm); A — for anchors, B — for marginal hooks, C — for hook proper of marginal hooks.