

GYRODACTYLUS MATOVI N. SP. (MONOGENOIDEA) FROM THE FINS OF COBITIS TAENIA L.

R. ERGENS, D. KAKACHEVA-AVRAMOVA

Institute of Parasitology, Czechoslovak Academy of Sciences, Prague and Central Helminthological Laboratory, Bulgarian Academy of Sciences, Sofia

Abstract. During our investigations of the parasitofauna of fishes in Bulgaria we also found on the fins of *Cobitis taenia* two representatives of the genus *Gyrodactylus* Nordmann, 1832, which are new to science. This species was designated *Gyrodactylus matovi* n.sp. in honour of professor K. Matov.

The material was originally fixed in 4 % formol and later transferred to a mixture of glycerin and ammonia-picrate after Malmberg (1956).

In the following text we are giving a detailed description and drawings of the determining features.

***Gyrodactylus matovi* n. sp.**

Host: *Cobitis taenia* L.

Location: fins

Locality: river Vrbnisha (Danube basin), western part of Bulgaria

Holotype (Fig. 1a): overall length of anchors 0.067 mm, of basal part 0.046 mm, of inner root 0.023 mm, of point 0.029 mm. The principal bar, size 0.006—0.007 by 0.027 mm, has lateral extensions of 0.002 mm in length. The long membranous extension at the back is 0.013 mm long. The auxiliary connecting bar is 0.002 mm long and 0.027 mm wide. The overall length of the marginal hooks is 0.032 to 0.033 mm, their sickle-shaped point is 0.006—0.007 mm long.

The morphological characteristics of the anchors of the haptor resemble those of *G. medius* Katheriner, 1893. In *G. matovi* n.sp., however, the sizes of these anchors and also of the two connecting bars and of the marginal hooks are different. In the shape and dimension of the marginal hooks, *G. matovi* n.sp. is very similar to the species *G. longiradix* Malmberg, 1956, only the morphological character and the size of the anchors are different in the latter species. Our species differs entirely from all other species of the genus *Gyrodactylus*, found on *Cobitis taenia* (*G. cobitis*

- 285 Bychowsky, 1933, *G. latus* Bychowsky, 1933 and *G. monstruosus* Gussev, 1955). **Paratype** (Fig. 1b): Overall length of the anchors 0.065 mm, length of their basal part 0.054 mm, inner root 0.024 mm, point 0.033 mm. Dimension of the principal connecting bar 0.007 by 0.026 mm, length of the triangular lateral extensions 0.002 mm. The length of the membranous extension could not be determined because the species became deformed during fixation. Dimension of the auxiliary connecting bar 0.002 by 0.025 mm. Overall length of the marginal hooks 0.032 to 0.033 mm, length of point 0.007—0.008 mm.

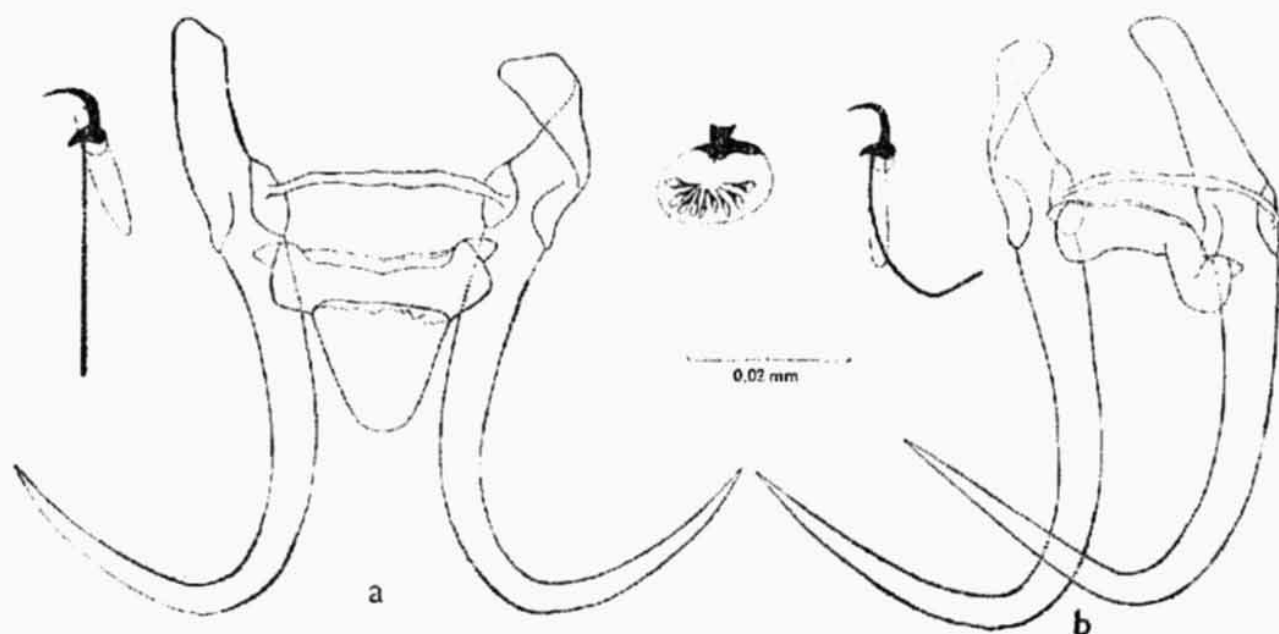


Fig. 1. Marginal hooks, anchors and copulatory apparatus of the species *Gyrodactylus matovi* n.sp. a—holotype, b—paratype

The holotype of *G. matovi* is in the collections of the Central helminthological laboratory in Sofia, the paratype in the collections of the Institute of Parasitology, Czechoslovak Academy of Sciences, Prague.

REFERENCES

- BYKHOVSKY B. E. et al., Opređelitel parazitov presnovodnykh ryb SSSR. Izd. AN SSSR Moscow—Leningrad, 1962.
- GUSSEV A. V. (Monogenetic trematodes of the Amur river basin). Tr. zool. Inst. AN SSSR 19: 171—398, 1955 (in Russian).
- MALMBERG G., Om förekomsten av *Gyrodactylus* på svenska fiskar. Skrift. Utgivna av Södra Sveriges Fiskeriföringen, Årsskrift 1956.