

CAPILLARIA LONGIFILLA (DUJARDIN, 1845) FROM PASSERIFORM BIRDS OF CZECHOSLOVAKIA

For many years the only information available on the species *C. longifilla* (Dujardin, 1845) was the original description of the male nematode from the host *Prunella modularis* (Passeriformes, Prunellidae) from France. This was followed by a study by WAKELIN (J. Helminth. 41: 257—268, 1967) containing a description of both sexes of this species and new information on the range of definitive hosts. WAKELIN recovered this nematode from 6 new hosts (of 4 orders): *Pyrrhocorax alpinus*, *Plesiotraga spinolata*, *Paroaria cucullata* (Passeriformes); *Lophoceros erythrorhynchus* (Coraciiformes); *Aix sponsa* (Anseriformes); *Coturnix coturnix* (Galliformes). Of these hosts only two are members of the European bird fauna (*P. alpinus* and *C. coturnix*).

While studying the helminth fauna of passeriform birds in Czechoslovakia, we found this species in the small intestine of two birds, one the typical host of this species, *P. modularis* captured in the vicinity of Vlašim (3 ♂♂ and 4 ♀♀), the other a new host *Alauda arvensis* (1 ♂ and 3 ♀♀) from a locality in the vicinity of České Budějovice. We are giving a brief description of the morphology and measurements of the nematode *C. longifilla* from our material of the typical host, thus adding more information on the variability of this species (Fig. 1).

Male: Overall length 10.30—12.41 mm, maximum width 0.058—0.065 mm. Length of muscular oesophagus 0.48—0.52 mm. Overall length of oesophagus 4.30—4.59 mm. The posterior end of the body bears prebursal alae 0.073 to 0.080 mm long. The pseudobursa 0.023 to 0.029 mm long and 0.033 mm wide, is supported from each side by a pair of lateral papillae. The spicule is 1.48—1.89 mm long, its proximal end is 0.014—0.017 mm wide. The spicule sheath bears a distinct transverse striation. The stichocytes number 40—41.

Female: Overall length 17.52—19.71 mm, maximum width 0.080—0.087 mm. Length of muscular oesophagus 0.48—0.56 mm, overall

length of oesophagus 5.67—5.84 mm. Vulva at 0.073—0.080 mm beyond the oesophagus. Typical of this species is the presence of pre- and postvulval cuticular alae. Posterior end of body

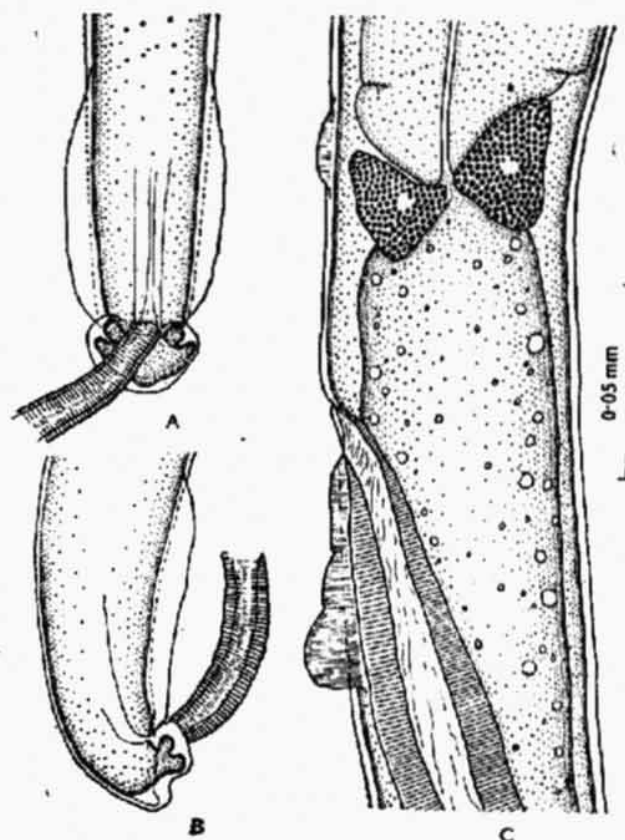


Fig. 1. *Capillaria longifilla* (Dujardin, 1845) from the typical host *Prunella modularis*. A — pseudobursa (ventral view); B — pseudobursa (lateral view); C — vulva region (lateral view).

rounded. Anus at 0.014—0.017 mm from posterior end of body. Eggs measure 0.053—0.058 × 0.023—0.030 mm. The stichocytes number 43.

The material from the host *A. arvensis* is in morphological agreement with the foregoing species, only minor differences have been observed in the measurements of the eggs (0.048 to 0.053 × 0.022—0.025 mm).

V. BARUŠ,
Institute of Parasitology,
Czechoslovak Academy
of Sciences, Prague