

# A CASE OF SCUTAL ANOMALY IN A RHIPICEPHALUS PULCHELLUS FEMALE

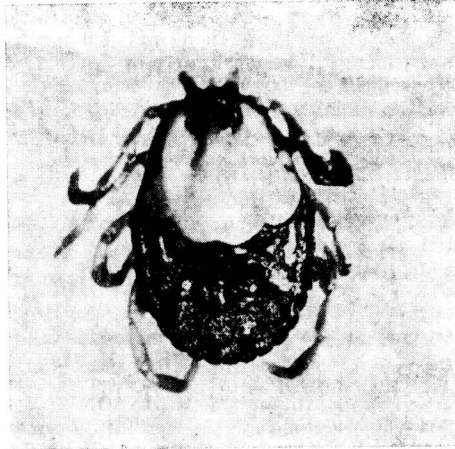


Fig. 1. Female of *Rhipicephalus pulchellus*, dorsal view.

During the study of Somali ticks collected by the junior author, a female of *Rhipicephalus pulchellus* (Gerst.) with an interesting scutal anomaly was found. The specimen was collected in Balad in September 1984 from a zebu. The scutum is larger in size, with distinct broad cervical depressions, its posterior margin is not rounded but irregularly sinuous, with four short lobes. Both eyes are about twice longer than usually and have an inverted drop-shaped form. The rest of the body is normally developed (Fig. 1).

Asymmetry and double ectromely of *R. pulchellus* male has been described (Nuttall G. H. F., 1914: Parasitology 7: 250—257). The scutal anomalies are not frequently reported in the

literature. In her world review on tick teratology Campana-Rouget (1950: La tératologie des tiques, Thèse Sciences, Paris, 132 pp.) mentions only two cases in *Hyalomma anatolicum* Koch females.

The authors are indebted to Dr. J. Štěrba (České Budějovice) for the preparation of the photograph.

V. ČERNÝ

Institute of Parasitology,  
Czechoslovak Academy of Sciences,  
České Budějovice

D. SCARAMELLA

Department of Agricultural  
Entomology and Zoology,  
University of Naples